

Connector No: 19828
Option:

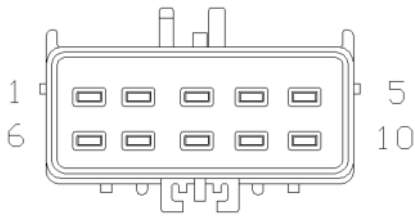
Connector Details

Color	Body_Under	BLACK
	Fascia_Front	NA
Part Number	Body_Under (Standard)	04687894
	Fascia_Front	04687906
Repair Kit Part Number	Body_Under (Standard)	05017114AA
	Fascia_Front	05013956AA
Part Description	(Standard)	~~
Cavity Count		10
Location View	Body_Under (Standard)	
	Fascia_Front	

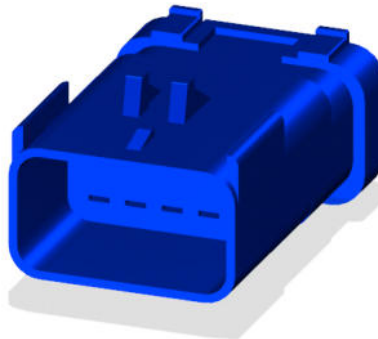
Connector Views

Fascia_Front

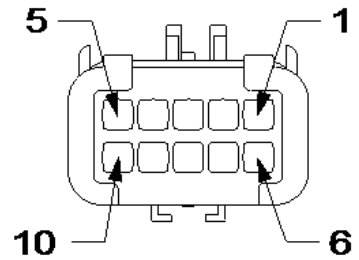
Mating Side:



Isometric View:

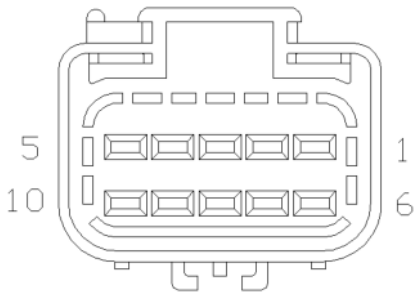


Wire Insertion Side:

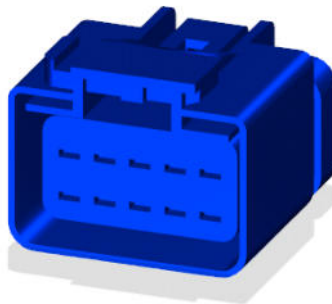


Body_Under

Mating Side:



Isometric View:



NOTE: When connector cavities are identified as "NO CONNECT" in the following table, there may be "Dummy (blunt cut) wires" or Cavities may be "Open", "Plugged, or "Flashed over" depending on vehicle option content.

Pin	Harness Family	Circuit	Circuit Functions	Color	Gauge/Size	Option
1	All Variants	D702	PARK ASSIST SIGNAL 1	WT / YL	20	
2	All Variants	D705	PARK ASSIST SIGNAL 2	WT / OR	20	
3	All Variants	D706	PARK ASSIST SIGNAL 3	WT / BK	20	
4	All Variants	D707	PARK ASSIST SIGNAL 4	WT / LG	20	
5	All Variants	D708	PARK ASSIST SIGNAL 5	WT / LB	20	
6	All Variants	D709	PARK ASSIST SIGNAL 6	WT / BR	20	
7	All Variants	X702	FRONT PARK ASSIST SENSOR SUPPLY	GY / LB	20	
8	Body_Under	X751	FRONT PARK ASSIST SENSOR GROUND	GY	20	
9	All Variants	NO	NO CONNECT	NA	0	
10	All Variants	NO	NO CONNECT	NA	0	